



# WAIHEKE MARINE PROJECT

WAIHEKE KI UTA WAIHEKE KI TAI WAIHEKE KI TUA

# Annual Report 2022



**G.I.F.T**  
Gulf Innovation  
Fund Together  
A Partnership Between Gales

 **FOUNDATION  
NORTH**  
Te Kaitiaki Mātua o  
Tūmanako o Te Kaitiaki

**Auckland  
Foundation**

**Waiheke  
Local Board**  
Whakarua o Waiheke  






# Contents

5	<u>Mihi</u>
6	<u>Annual Report Introduction</u>
6	Purpose
6	Recap on the Waiheke Marine Project (WMP)
6	Describing progress
8	<u>WMP Backbone</u>
8	Planning & Funding – the WMP Steering Group
10	Mana whenua – Ngā Uri o Ngāti Paoa ki Waiheke
14	Communications
16	Knowledge Amplification
18	Kaimahi - Navigation & Coordination
19	Youth Action
22	<u>Ngā Pipi / Actions</u>
22	Completed Pipi
24	Active Pipi
26	Germinating Pipi
26	<u>Conclusion</u>



# Mihi

Tuia te Rangi e tū iho nei,  
Tuia te Papa e takoto nei,  
Tuia te moana e whakamarie nei  
Tuia tatou ki a tatou anō  
Tihei mauri ora  
Ko te mihi tuatahi ki a koutou ngā iwi  
mana whenua  
e honohono ana ki Waiheke.  
Me mihi ka tika ki a koutou e tautoko ana  
tēnei kaupapa whakahirahira,  
arā, ko te Waiheke Marine Project. Ka rawe  
tō tatou whaingā mo te moana  
e piringa ana te Moutere o Waiheke.  
E tika ana te mihi a ngā mātua tūpuna  
"Nāu te rourou,  
Nāku te rourou,  
Ka ora ai te iwi"  
Nō reira, me haere tatou ki tō tatou waka  
kotahi  
Hei whakaora te mauri o Tikapa Moana.  
Waiheke ki uta, Waiheke ki tai, Waiheke ki  
tua.  
Mauri ora ki a koutou.

Bind Ranginui who stands here  
Bind Papatuanuku who lays here  
Bind the sea that brings peace to us  
Bind them to us the people

Firstly, I acknowledge mana whenua  
That connect to Waiheke

It is right to acknowledge those of you who  
have supported this important Kaupapa  
that is, the Waiheke Marine Project. What a  
pleasure it is to have such an amazing,  
collective goal for the moana  
that surrounds the island of Waiheke

It is true what our ancestors have said  
"With your basket and mine,  
the environment and people will thrive"

And so, let us move forward on this waka  
together  
to bring the mauri back to Tikapa Moana.



# Annual Report Introduction

## 1st October 2021 - 30th September 2022

### Purpose

Phase One of the WMP was about tilling the social field so the seed of Tiriti guided and collaborative marine care action could be planted, germinated and begin to grow. A thorough summary of this phase is found at [waihekemarineproject.org/report](http://waihekemarineproject.org/report).

Phase Two of the WMP is taking that germination to scale around the whole island, supporting the growth of multiple, diverse projects to collectively protect and regenerate Waiheke's marine environment. This report describes the many actions completed, underway and in conception against the [Phase 2 Project Plan](#). The report also describes what we are learning along the way and next steps.

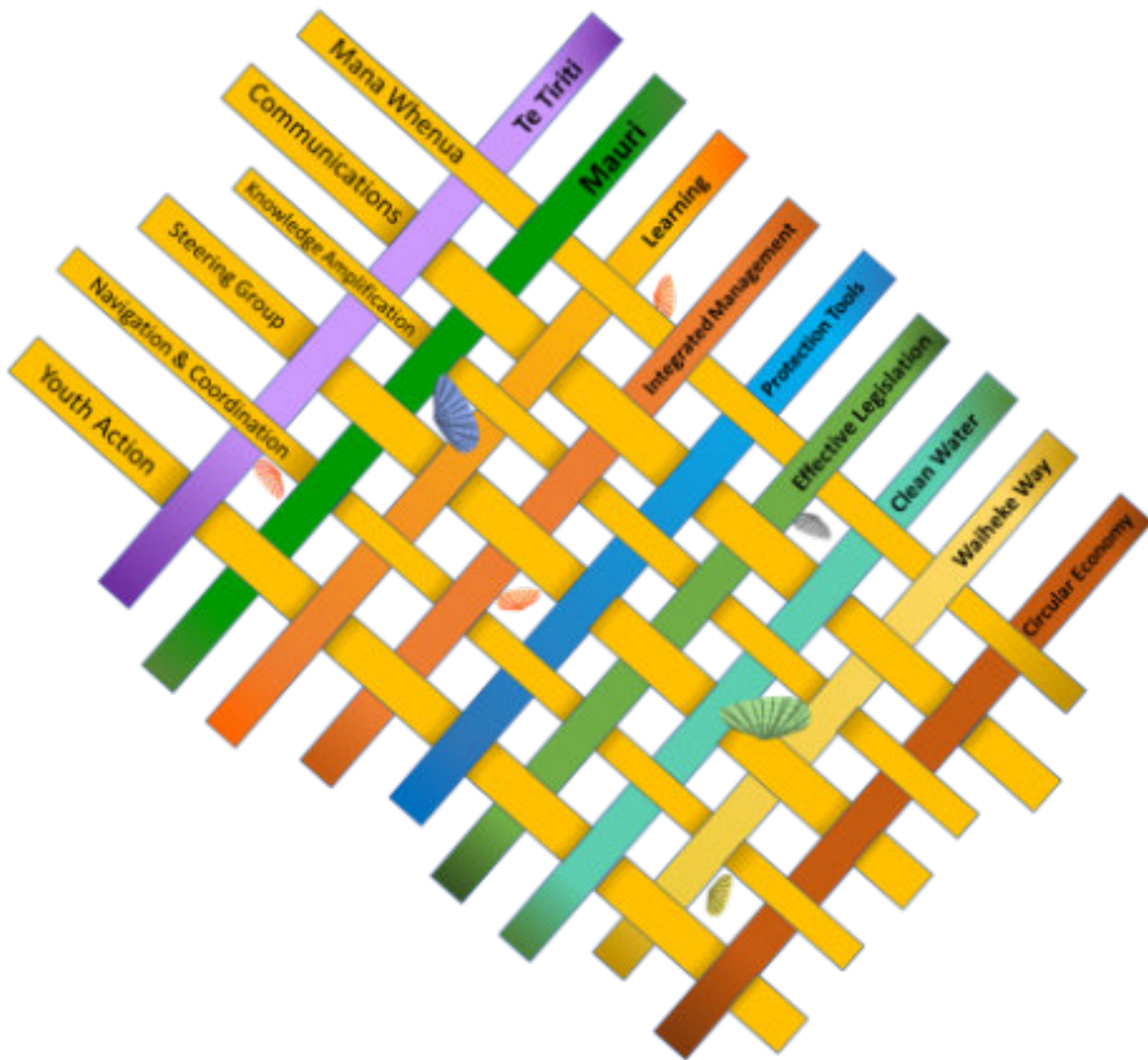
### Recap on the Waiheke Marine Project (WMP)

The Waiheke Marine Project (WMP) is an exciting prototype of community and mana whenua taking collaborative action to protect and regenerate the island's land and sea. The aim is to

- **Embody Ahu Moana<sup>1</sup> at scale so that the mauri of Waiheke Island's marine environment is protected and regenerated;**
- **Enable all voices to find ways through the systemic barriers and resourcing capacity that so often inhibit marine care efforts;**
- **Provide the best conditions for ongoing implementation of projects that deliver on the 9 common ground commitments reached at the Future Search hui in late 2020.**

The WMP has an innovative collaborative structure known as Te Kete that is depicted in the figure on page 5 and best described as an open weave kete with 6 backbone threads or workstreams that work together to support multiple reinforcing actions (or pipis) that collectively deliver on the aforementioned 9 common ground commitments. Just like a kete, there are overlaps that contribute to the strength of the container. This woven way of working is notably different from the silos common in organisations.

<sup>1</sup> Ahu moana is a concept promoted by Tai Timu Tai Pari / Sea Change Plan that supports collaborative management approaches between mana whenua and local communities to restore and improve coastal fisheries and environments in their local nearshore areas. The WMP is actively prototyping this concept.



Te Kete

## Describing progress

Narrating the progress of the WMP is best approached through Te Kete with an exploration of firstly the backbone threads that catalyse, activate and support marine care and secondly an exploration of the multiple pipi (or actions) themselves. For each backbone and each pipi, this progress report will:

1. Describe the activity in the backbone thread or pipi;
2. Acknowledge the learning in progress;
3. Identify some next steps.

*“I’d really like to acknowledge how system changing your mahi is, and the challenges that come along with this. The work of the WMP is paving the way for new ways of being and the courage and aroha you all show in your work is amazing.”*

—Kim Collins, Foundation North

# WMP Backbone

There are 6 threads to the WMP Backbone that operate in a high trust model with the Steering Group taking final responsibility for the overall use of funds and reporting on outcomes. A monthly Backbone Update is reported to the Steering Group, tracking the Purpose, People, Budget, Activities and Energy flow of each backbone.

## Planning & Funding - the WMP Steering Group

The Steering Group (SG) meets monthly in addition to SG members contributing to WMP activity within each month. The SG has formed processes to enable oversight of the complexity of the multiple reinforcing activities ensuring WMP core values are embodied and the 9 voices from the Future Search continue to be connected and expressed in WMP priority work.

All SG are committed to embodying Te Tiriti and two SG members ensure a bridge with the dedicated mana whenua work of Ngā uri o Ngāti Paoa o Waiheke. Each month a spotlight session brings a voice from the original 9 voices to the SG table. This assists the SG to keep connected with the whole system.



Matt von Sturmer



Alice McSherry



Dean Ogilvie



Tessa O'Shea



Lindsay Jeffs



Grant Crawford



Jeanine Clarkin



Craig Thorburn



## Budget update

The SG tracks Income & Expenditure and has a constant focus on raising funds to implement the 9 common ground commitments. WMP has raised funds for Phase Two from several sources. Ongoing fundraising is required to meet its 3 year budget target and to sustainably enable marine protection and regeneration activities.

## WMP part of a bigger system

Although locally focused, the WMP is set in a context of regional (Tikapa Moana) and national marine management. The WMP is taking a deeply relational approach that includes forming conscious allyship with other parts of the system to enable collective action. The WMP was announced joint winners in the Collaboration category in the Mayoral Conservation Awards in November 2021.

In 2022, the WMP was a finalist in the Innovation category of the Mayoral Conservation Awards and a finalist in the Outstanding collaboration category of the Sustainable Business Network Awards.

The WMP is honoured to reciprocate with its broad ecosystem of peers and allies by speaking at various events and sharing the WMP experience and lessons learned. In the first year of Phase Two, this has included speaking at the Hauraki Gulf Forum conference, at Philanthropy NZ climate action working group, at a Coromandel community forum, at Waiheke schools, at a five-year celebration of GIFT philanthropy in Tikapa Moana, at Devonport Yacht club, at Waiheke Local Board and more.

## Steering Group Learning

The WMP Steering Group runs a learning reflection at each monthly steering group meeting. In addition, Foundation North provide evaluation services that produce an Insight report for the steering group to reflect on progress.

## Communications next steps

- Continue raising funds from a diversity of sources to meet WMP Phase 2 budget targets;
- Continue growing the circle of allyship in marine protection and regeneration;
- Persist in implementing the priority actions of the backbone and supporting multiple pipi.

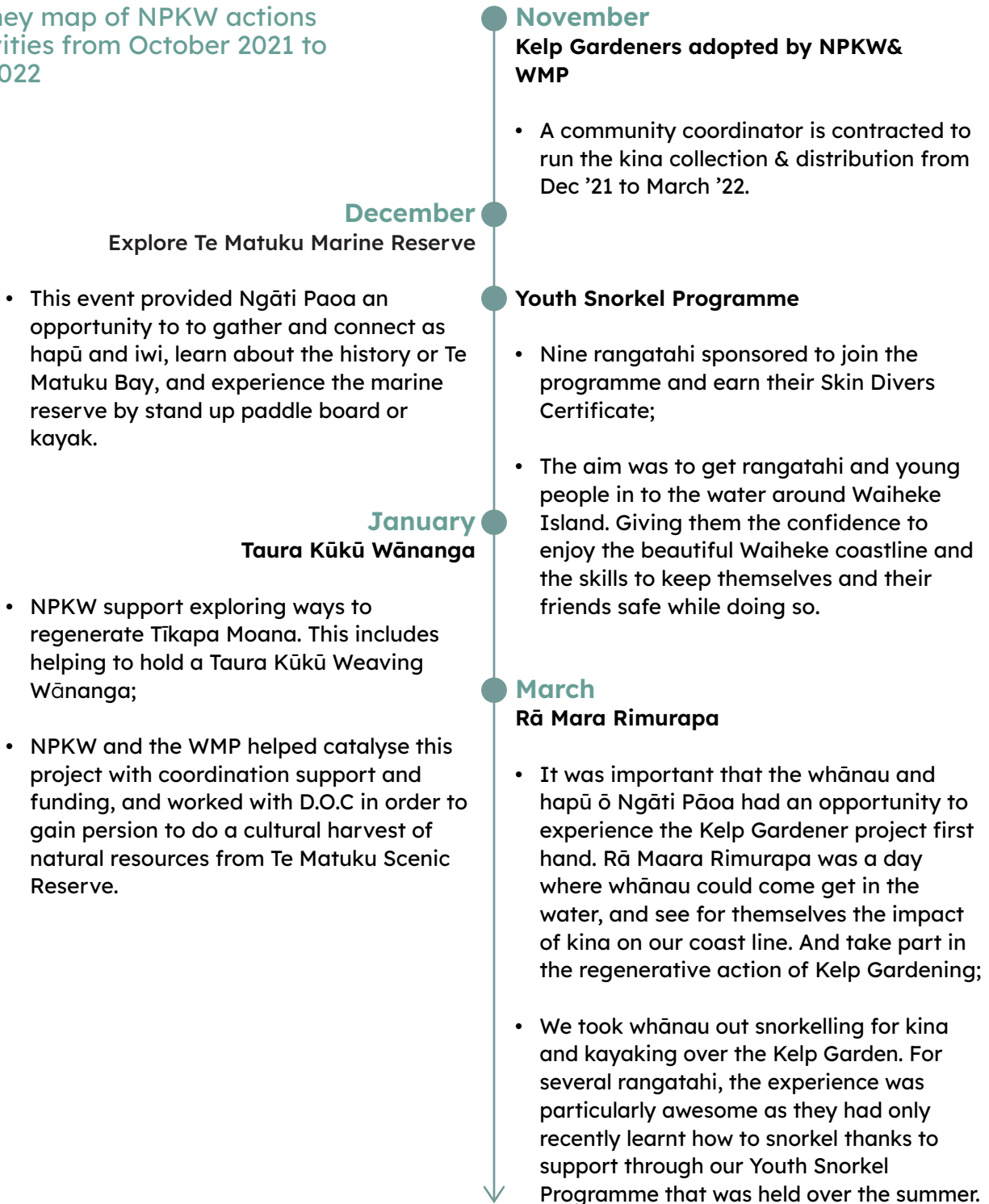
# Mana whenua - Ngā Uri o Ngāti Paoa ki Waiheke

Ngā Uri o Ngāti Paoa ki Waiheke (NPKW) is a grass roots rōpu (group) and is an integral part of the WMP. Many Ngāti Paoa individuals have taken an active role in the creation and formation of the WMP since the very

beginning and we acknowledge that we stand on the shoulders of those who have gone before us. This journey map briefly describes the diverse and plentiful activity of the last 9 months for NPKW.

## WMP Phase 2 Ngāti Paoa ki Waiheke

A journey map of NPKW actions & activities from October 2021 to June 2022



## March

### Regenerative Dive Training Programme

- Conversations in February revealed a real need and interest in supporting mana whenua and Waiheke locals to be scuba dive trained. This resulted in the creation of the WMP Regen Dive Training Programme;
- 22 local and mana whenua participated in the programme, earning their PADI Open Water Scuba dive certificate. These divers were then registered with the WMP in order to be invited to participate in regenerative dive activities such as the Kōura Dive Survey 2022.

## May

### Kōura Dive Survey

- Kōura are one of the four species protected by Ngāti Paoa's rāhui and s.186a of the Fisheries Act, and Ngāti Paoa ki Waiheke have an ambition to rewild kōurato Waiheke reefs;
- WMP Regen Divers participated in this years Kōura Dive Survey in order to understand the abundance and distribution of Kōura around Waiheke's coast.

## Hui-ā-Whanau

- During phase one, an annual whanau hui was established, with the second such hui being hosted in May 2022 at Palm Beach Hall;
- This hui was to reflect on the actions of the last year, workshop current projects and set NPKW goals and priorities for the next year of kaitiakitanga mo te moana o Waiheke;
- It was an interactive day with on and off water activities, toi fabric printing, and whakawhanaungatanga.

## October

### Hydrophone Install

- NPKW Regenerative Divers who obtained their scuba dive tickets through the Regen Dive Training Programme supported the WMP & Kelly Tarltons Marine Wildlife Trust to place a hydrophone in the moana around Waiheke;
- It is thought that a healthy reef system is a noisy reef system. The hydrophone records the sounds that can be heard underwater. This will help to further inform the regenerative actions that the WMP is catalysing.

## NPKW Map of the Action



This graphic gives a spatial impression of the diverse and plentiful activity of the last 9 months for NPKW.

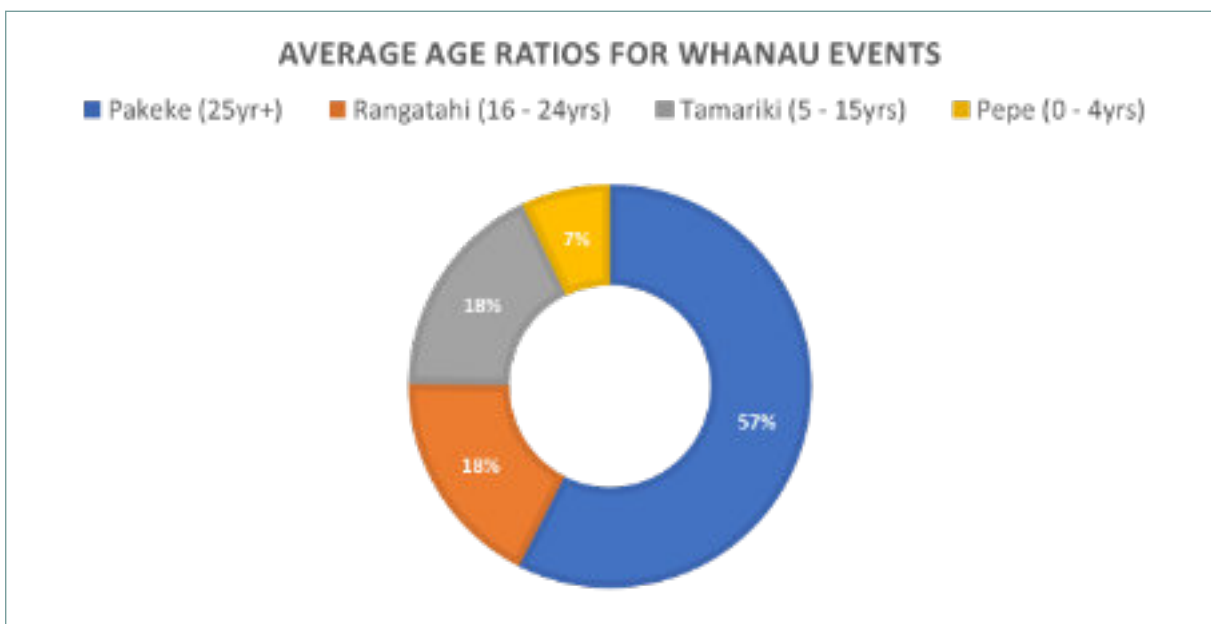
## Mana Whenua learning

### Job Opportunities

Many of the WMP pipi create an opportunity for contract work. These opportunities are advertised via the Gulf News, Social Media, and Email Campaigns and through Ngāti Paoa forum. A recruitment and selection process is followed for every role as a way to make sure that the WMP is attracting and hiring the needed knowledge, skills, and abilities.

### Buddy System

NPKW initiated a buddy system within the rōpu (group) early on in Phase one. This was to ensure cultural safety and protection for our whānau who are working in this kaupapa. This system has now permeated the whole of the WMP. It has created an environment of support, and feeling supported, turns the wheels of collaboration.



## Engagement

In Phase 2, NPKW's email database has doubled in size. With every participation opportunity, we are attracting Ngāti Paoa whānau who attend regularly, and new whānau who are joining for the first time. Attendees' ages range from babies to 72 years old. Opportunities to go paddle boarding, kayaking, swimming, boat rides, creative workshops and VR experience have offered whānau a way in which to get in, on or experience the moana and overcome barriers (such as the cost to travel to Waiheke). NPKW have also sponsored formal opportunities for whānau to earn skin diving and scuba PADI diving qualifications, first aid certified training and visit places like Poor Knights and Otata.

## Mana Whenua next steps

### Capacity Building

NPKW is in the process of inviting more whānau to join NPKW in order to build our capacity. Over the course of the next few weeks an EOI be sent out encouraging those with a particular interest in communications, Kororā, and Kina/Kelp rebalancing to join.

### Kelp Gardeners

There is a significant amount of energy and encouragement for the Kelp Gardeners project to continue within the community, and within Ngāti Paoa. Over the next few months NPKW will be preparing for, and planning the '22/'23 season of the Kelp Gardeners which aims to have te ao māori and mātauranga Māori held at the centre of all its operations.

### Kororā Care

Efforts to understand the threats to kororā and contribute to kororā care have been underway for many years. The WMP has been working in partnership with WWF to establish a Kororā Care project that helps to create an opportunity to learn and share those learning on how to best protect and look after one of our taonga species.

## Capacity

Progressing past the ideas stage of phase one has seen an increase in the expectations of those who participate in NPKW, and a decrease in capacity. This is not due to a lack of interest or commitment, but instead because of a change in the types of knowledge and skills necessary coupled with a post covid world and the demands of everyday life.

### Kōura Rewilding

Ngāti Pāoa ki Waiheke and the Waiheke Marine Project (WMP) are stepping up to do the work to rewild kōura to Waiheke reefs. With the protection of Ngāti Pāoa rāhui (recently supported by s186a of the Fisheries Act) and the whole community focused on protecting and regenerating the Waiheke marine environment, the time is right, now, to run a rewilding kōura trial.

### Hapūtanga

Alongside exploring what true treaty partnership between the community and mana whenua looks like, NPKW is working to understand how we can both acknowledge and hold true to our hapūtanga and whakapapa to Waiheke, in a way that is empowering and inclusive of all of Ngāti Paoa.



# Communications

The Communications team has evolved in Phase 2 with the current team of eight participants being a blend of part time contractors and committed volunteers.

The team meets either in person or online fortnightly and adds additional focused planning hui as required. A recent example was connected to the [Future Search commitment](#) of 'Protection Tools'. The team brainstormed the various options available to the community and built a plan of how these might be discussed within the project's channels. Tracking statistics is key to gauging our audience engagement and an example is [the quarterly newsletter](#) which has seen open rates of up to a huge 63.6%. The recent addition of a Communication Support role has enabled an increase in Social media activity of 33%.

## Our key Channels

[Website](#), [Instagram](#), Digital and Print Graphic series, [YouTube](#), e-Newsletter, [Facebook](#) has been added in 2022, a [Blog](#) and print media such as Waiheke Gulf News and Waiheke Weekender. In person presentations have also been delivered to community groups such as Coromandel Ocean Protection Voices, Seatalks at Devonport Yacht Club and industry engagement through groups such as the Marine Transport Association, youth presentations at Waiheke High School.



The printed Kōura Dive Survey guide book for participating Divers and boat crews



Examples of of fortnightly graphic series - Social Media and Print

**ADDING A PET TO THE FAMILY?**

**DID YOU KNOW?**  
Pet Owners are accountable for the welfare of their pets 24/7 for life. They are also responsible for the impact of their pets on the environment, and ensuring all pets live in harmony with birds, wildlife, domestic animals, livestock, neighbours and the general public.

Before welcoming a new pet, make sure you can tick all these boxes:

- ✓ adopting from a rescue or shelter, not from a breeder or shop.
- ✓ own a home or rent a long-term pet-friendly house.
- ✓ financially secure.
- ✓ extra budget for insurance and emergencies.
- ✓ time for training, socialising and care.
- ✓ reliable support and pet sitter.

**DO YOU NEED HELP?**

**IT'S NEVER OK** to neglect, abandon or dump an animal. If you are struggling to cope or unable to provide your pet with the care it needs, or you find a distressed or depressed animal, please contact WISCA for advice and support.

**BE A RESPONSIBLE PET OWNER**

Help protect the birds & wildlife of Waiheke Island

**CONTACTS:**  
WISCA  
Waiheke Island Society  
for the Care of Animals  
027 389 5107

Te Karowai o Waiheke  
Predator Free Waiheke  
0800 2473 7664

Native Bird Rescue  
020 473 9464

Wildlife Rescue  
09 372 6744

Supported by:

Collaboration on Responsible Pet Ownership insert in Waiheke Gulf News

## Communications learning

- The need for a multiplicity of communications tools to reflect the multiplicity of action and diverse voices;
- Communicating the activity, messages and personality of a movement like the WMP has different needs to that of communication for a product or service brand;
- Finding a sweet spot of being nimble with releasing material and time to generate trusted content is an ongoing challenge;
- Learning how to collaborate as a comms team rather than from that of a traditional organisational structure;
- Harnessing creative contributions and spirits whilst displaying consistent and clear messages requires additional steps and acceptance.

## Communications next steps

- Increasing the 'āhua Māori' of our project communications;
- Refreshing the project website to bring light to each of our Pipi (sub-project actions);
- Connecting with the 'to be built' Digital Action Tracker;
- Finding innovative ways to support the diverse pipi to mature in to projects of their own outside of the WMP;
- Developing a tool kit of resources to apply consistency as new Pipi is added, existing projects evolve and new Team members join.

## Knowledge Amplification

The WMP Phase 2 Project Plan explicitly describes the WMP as “holding space for the amplification and open-source sharing of all knowledge sources, including mātauranga Māori, citizen and western science, so that the best available information supports decision making.” This is one of the core 6 values of the WMP and underpins one of the WMP goals:

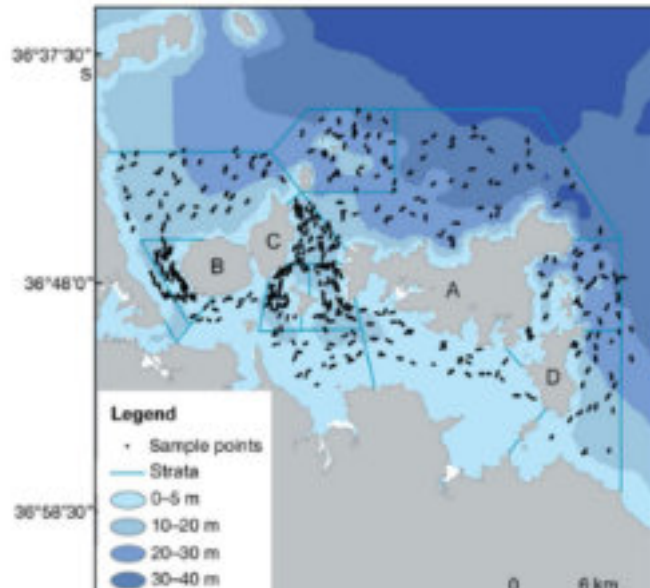
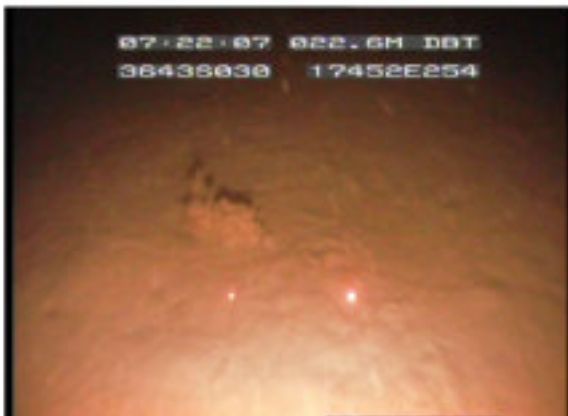
**To develop open-source action and evaluation tools to support self-managed and ongoing marine protection and regeneration actions at Waiheke Island.**



The WMP entered into a working agreement with the National Science Challenge Sustainable Seas Project 4.3 ‘Enabling Kaitiakitanga and EBM’ on the 16th November 2021. This agreement includes the in-kind contribution of funds by Sustainable Seas to develop a digital action tracking tool with and for the WMP. Project leads Lara Taylor and Dan Hikuroa have been working closely with the WMP to build such an open-source knowledge sharing tool. Activities have included:

- Met, scoped and learned from other users of digital data tools for environmental action
  - Sustainable Coastlines with their Litter Intelligence
  - Auckland Council with Volunteer Connect
  - Waiheke Resources Trust with Wetlands Arc GIS
  - University of Waikato with Manawanui Land Diversification
  - Australian Govt, Great Barrier Reef with Eye on the Reef;
- Attended a two day developmental evaluation workshop;
- Explored digital data developer options to work with the WMP. Now working with Shanan Tana of Touch Media;
- Tested appetite for digital action tracking with Ngāti Paoa ki Waiheke;
- Confirmed a WMP Digital Action Tracker subgroup to build the platform.

## FISH & HABITAT DATA



Parallel to the work on building a digital knowledge platform for marine protection and regeneration, the WMP has been active in collecting and collating data. This includes:

- Contracted Dr Glen Carbines and Lilly Peacocke to collate existing public information about Waiheke's marine environment. The above slide is an excerpt from the data being collated and gives a solid start position for understanding the current breadth and depth of knowledge.
- Ran 2 kōura surveys over 2 winters increasing coverage of 2021 (18,000m<sup>2</sup>) to 2022 (28,000m<sup>2</sup>).
- Worked with Conservation dog specialist Jo Sim to run a kororā survey in August/September 2022
- Collating data from the regular Beach Cleans being run by the WMP.

## Knowledge amplification learning

Leaning into knowledge sharing is leaning into a space laden with power dynamics. Knowledge is as much about trust as it is about content. The overarching learning in this backbone work therefore has been to operate at the pace of trust that honours and opens space for the often marginalised knowledge systems in conventional research practice.

## Knowledge amplification next steps

Buoyed by the message from the NPKW wānanga that there is an appetite for building a digital action tracker, the subgroup has been populating the digital platform using a few existing WMP data sets (include kōura survey data, NPKW activities, publicised data from contract work and other content). It is hoped to get this up and running by early 2023. Ongoing data collection will be openly shared on this platform.



## Kaimahi - Navigation & Coordination

Three part-time (20 hours a week) contractors form the nucleus of the navigation and coordination of the WMP for the first year of Phase 2. The roles are:

- The Kaiwhakatere/Navigator - constant observation of WMP position, planning, timing, energies
- Mana whenua Kaimahi - provides āhurutanga for NPKW and bridge with WMP
- Hapori Kaimahi - central WMP coordination point for the Waiheke community

Collectively the 3 Kaimahi notice the materials and weave of the WMP kete, looking for strength and durability so the pipis/actions can flourish. The following table briefly summarises Kaimahi activity over the first 9 months of Phase 2.

Activity title	Activity description
WMP Processes	Create and maintain key WMP processes such as the Google Drive, Zoom and webinar capabilities, SLACK, meeting processes, project planning including budget tracking and ongoing action documentation.
HR & Recruitment	Run recruitment processes for the Steering Group and all contract positions. Feedback from interviewees that processes are professional. In addition to the Kaimahi, 8 people have worked on contract for WMP in these 9 months with more anticipated to be recruited as pipi develop.
Event management	Run multiple events from first aid training to public events and several water based activities. All events run to budget, with H&S and high engagement.
Relationships	Navigating diverse world views, life experiences, agendas and interests in service of the WMP kaupapa is the art and skill applied by the kaimahi to ensure healthy relationships are the vehicle for social change and marine regeneration at island scale.
Steering Group support	Full support of the 8 SG members from meeting agendas to action follow up and understanding SG priorities and individual needs and interests.
Pipi implementation	The 3 Kaimahi are actively involved in the various pipi, taking leadership roles in some and support roles in others.



## Kaimahi - Fixed term contracts

Activity in the many pipi and WMP backbone has enabled contract work opportunities. In the first year of Phase Two, contract roles have been advertised with a recruitment and selection process that embodies WMP values. Roles have included:

- 2 Kōura survey coordinators, in partnership with Kelly Tarltons Marine Wildlife Trust;
- Kelp Gardener coordinator for summer of 2021-22;
- Information Collation contract;
- Pou Kōkiri, in partnership with BLAKE;
- Beach Clean coordinator;
- Tūranga Karere/ Comms coordinator;
- Kaihāpai rukuruku/Regen dive coordinator;
- Kelp Gardeners Kaiārahi, Coordinator and mana whenua intern.

The nature of the WMP embraces paid and voluntary roles working together.

## Kaimahi learning

Operating as the central whiri of the WMP kete brings a constant learning for the Kaimahi. Being a system-change movement means there is no playbook to follow, rather the activities are novel and need collaborative consideration and consistent documentation for learning purposes. Useful attributes:

- Commitment to the WMP movement, purpose, values and desired outcomes
- Low egos and high willingness to operate collectively as an ecosystem
- Courage to be vulnerable and work with discomfort of not knowing
- Bravery of speaking up and stepping up

## Kaimahi next steps

Heading into the second year of Phase 2 there is a projected shift of Kaimahi work share with the Kaiwhakaterere/Navigator reducing her hours and the 2 Kaimahi taking increased responsibilities and sharing with the multiple fixed term contract roles. This is an exciting shift with the emphasis being on local capability and capacity building. New fixed term contracts for the WMP Regenerative Dive Programme and the expanded Kelp Gardeners will be advertised.

## Youth action



Conscious effort is put into having youth perspectives woven throughout WMP activities and contracting youth into roles where possible. Funds spent in this area have embodied the phrase “good bang for your buck” with youth energy, innovation and commitment enlivening the WMP.

Activity title	Youth Activity description
MEI school days	WMP worked with WRT in the MEI (Marine Education Initiative) and EMR (Experiencing Marine Reserves) to support Waiheke High School experiential learning. This included snorkelling, citizen science and water testing.
Marine Mural	WMP worked with WRT in the MEI to connect with fantastic students and talented young artists to contribute to the mural on the wall of Waiheke Dive. NPKW shared purakau in the creative process with the students.
Beach Ambassadors	WMP & WRT beach ambassadors programme support one another each summer. WRT hire youth to monitor the beaches and educate new people on pollutants, waste removal and dogs.
Youth snorkelling	WMP worked with Waiheke Dive to put on a 6 week youth snorkelling programme over the summer. 16 youth in 2 groups (8-12 & 13-16 years) including targeted places for Ngāti Paoa ki Waiheke rangatahi.
Young Fishers	Hired a local young fisher who has made 5 prototype fishing tackle recycling pods to go up around the island. We have person from AT and local community groups to out these up and begin conversations about good sustainable fishing practices
First Aid training	Youth took part in the custom WMP first aid training.
Kororā education	WMP worked with MEI to discuss Kororā care at Te Huruhi primary school. The students made posters that the WMP are using in comms to raise kororā awareness. We have also shared these with other local groups e.g Te Korowai and the schools. We had one youth sign up to volunteer with us to do Kororā observations.
Circular Economy at the Ostend Market	WMP supported with funding, the hiring of a youth coordinator for the Good to Go project at the Ostend Market. The project focuses on reducing waste and encouraging reusable systems and behaviour change.
Kōura Kaimahi	Hired youth Te Ata Paul-Sumich to coordinate the 2nd annual Kōura survey with mentorship from Phd candidate Mallory Sea of Kelly Tarlton's Marine Wildlife Trust.
Tūranga Karere	Hired youth Sophie Lewis for a year's contract as WMP Comms support Coordinator.
Events/ Conferences	We have made sure to give local and off island NP rangatahi opportunities to participate in EMR (Experiencing Marine Reserves) snorkel events on Waiheke and Otata. Funded tickets for 4 youth to attend the Hauraki Gulf Forum Marine Conference.
Beach clean coordinator	We hired a local youth on the island to be the Beach Clean Coordinator. She is hired to run 6 community beach cleans over summer and work with the local schools and Sustainable Coastlines to run Litter Intelligence (LI) Citizen Science data collection. So far Tilde has ran 4 beach cleans, one for the community, 2 for local schools and one as a WMP backbone bonding experience. This project links in nicely with the MEI programme. Coming up we have a group of 40 Ngati Paoa students from Thames coming to do a beach clean and LI, a wetland clean up and a beach clean at Omiha / Rocky Bay with a Kororā talk afterwards.

## Youth action learning

It is an ongoing learning journey to find ways to work with and support youth in marine protection and regeneration. The diversity of youth activity over the 12 months has revealed the following lessons:

- It is so important to follow the youth's energy. Link into existing groups, like WHS sustainability group and others, rather than attempting to create a new marine care youth group;
- Be conscious of youth's responsibilities with schooling, whānau and part time work;

## Youth action next steps

- We have a focus on Ahua Māori in MEI activities with WMP and NPKW support. Our first NPKW led MEI school session is the 16th November;
- Giving the opportunity for rangatahi to get trained up in snorkel surveys with EMR;
- Keep finding opportunities for youth internships and contracts with mentoring support;
- Increase ways to hear and action youth ideas for marine protection and regeneration.



- Provide many and varied practical experiences;
- Partnering youth with support/mentors is empowering while enabling self management;
- Finding contract opportunities gives pathways for youth to combine marine passion with work;
- Youth energy brings hope and creativity to WMP action.



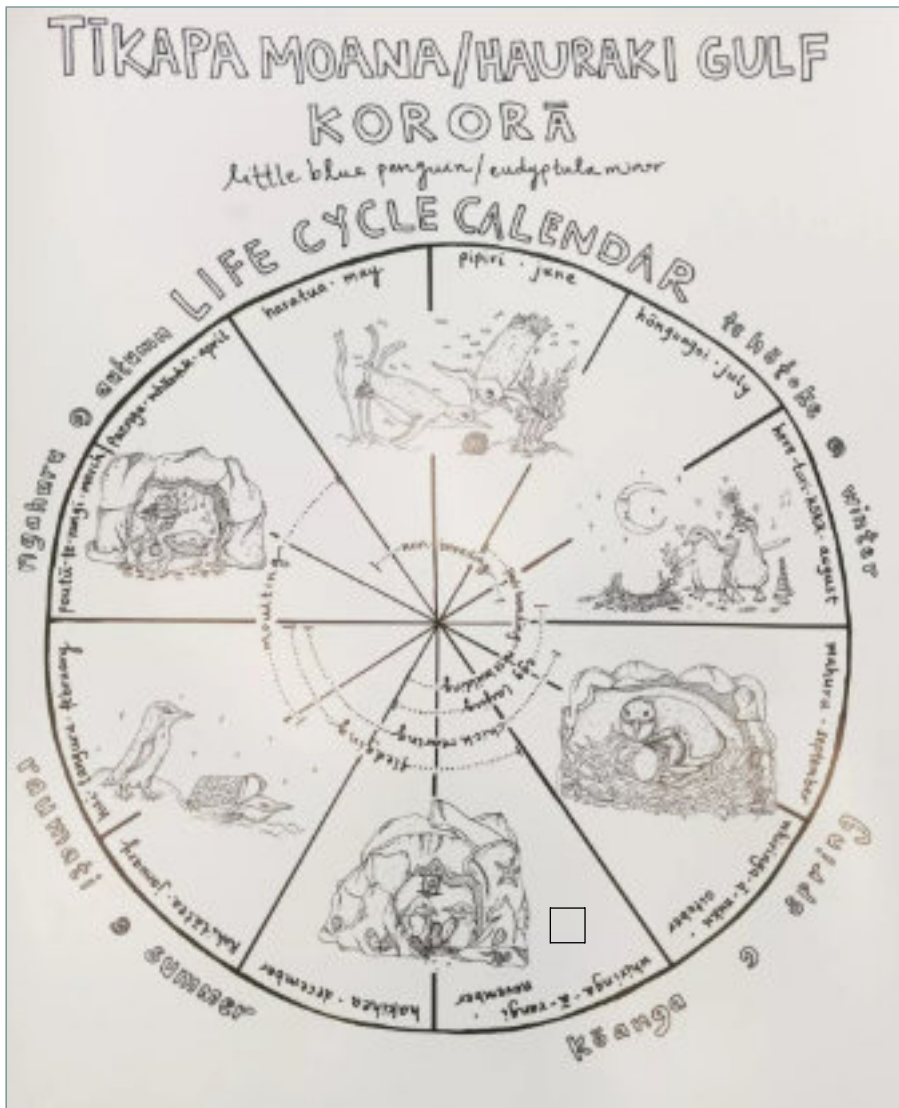
# Ngā Pipi

The many projects and actions underway with the WMP are known as pipi. An explanation of this term is found on the [WMP website](#). There are multiple reinforcing pipi or actions that are being generated or supported or amplified by the WMP. A Pipi Register is maintained and monitored by the Steering Group, tracking the Status, Budget, Champions, Planning documents and updates of each Pipi.

## Completed Pipi

Pipi Name	Activity description	Learning	Next Steps
Marine Mural	Collaborative mural painted on the side of Waiheke Dive shop in Oneroa. Layers of collaboration and Te Tiriti partnership. Mural unveiled on 27th March '22.	Tangible and visible activity. Powerful to have mana whenua guiding design with community and youth creativity.	Explore more art opportunities to “blue and brown the town”.
Te Matuku Explore	Extensive day exploring and learning history and biodiversity of Te Matuku and eastern end of motu.	Huge success to reconnect physically with the motu and moana.	Explore other parts of the motu.
Kuku Taura	Ngāti Paoa run wānanga to weave natural materials for kūtai spat collection.	Huge interest and appetite by Ngāti Paoa for hands-on.	Be guided by NPKW on further steps.
Beach ambassadors	Collaborative workshop at the beach.	Uncertain covid times made this difficult but lots of ideas for next summer.	Looking at a Seaweek event collaboration and bringing more awareness around dog behaviour and bird sites to beach goers.
First Aid course	Custoed training with 16 people attending from mana whenua, local Māori, rangatahi & SG members.	Highly engaging and effective first aid learning. Want to integrate Māori world view & marine specific content.	Investigate running First Aid training for marine care situations in 2023.

Pipi Name	Activity description	Learning	Next Steps
Kelp Gardeners	WMP took on the Kelp Gardeners project, integrating it into WMP kete with focus on tangata whenua connection. KG coordinator summer 21- 22.	There is an extensive appetite for learning and caring for the rebalancing of kina with kelp. <a href="#">Full report</a> sent to FN.	A refreshed Kelp Gardeners is being built, based on NPKW guidance and lessons from the summer KG.
NPKW Hui-a-Whanau	1 day wānanga for ngā uri o Ngāti Paoa at Palm Beach hall and coastline. Focus on Kelp Gardeners and Digital Action tracker with ongoing build of NP connections and capacity.	Covid impacted numbers for this wānanga. Still great engagement in kaupapa and guidance for future.	Agreed to continue mahi on Kelp Gardeners and Digital Action Tracker.



A life cycle calendar developed as a teaching resource in collaboration with local artist Billie Fairchild, MEI & WMP.



## Active Pipi

Pipi Name	Activity description	Learning	Next Steps
<b>Regenerative Dive Programme</b>	Youth snorkel programme summer activity for 16 youth. PADI scuba certification for mana whenua and Waiheke local divers so marine care activities can be run locally. 25 people were selected to get PADI scuba trained or refreshed. Very popular, 21 completed.	Enormous learning from this innovative programme. Ran a full evaluation with an internal report ue to WMP SG in August.  The lessons learned enabled the build of an expanded Regenerative Dive Programme for 2022/2023.	Obtain sufficient funds to run a 2nd Regenerative Dive Programme.  Opportunities to be dive trained advertised late November to train in February 2023.  Explore marine biosecurity activity with MPI and Auckland Council.
<b>Kōura Dive Survey</b>	2nd annual kōura dive survey. Improved on Year 1 with dedicated Kōura survey coordinators. 106 volunteers surveyed 28Ksqm.	Hugely popular with lots of lessons. Aim is to improve the survey each year to be a world leading locally run marine survey. Gaining credibility in Govt and science circles for locally gathered data.	Shared data at 2 events on 29th & 30th July.  Evaluating 2nd year with improvements for 3rd year in 2023.
<b>Kōura rewilding</b>	A NPKW led exploration of what it would take to rewild kōura to Waiheke reefs. Currently looking at source stock of adult kōura and understanding kōura fisheries management.	The QMS is operated at a large fisheries area scale and with a focus on extraction. This makes local/fine level marine regeneration efforts a square peg in round hole. The idea of kōura rewilding is very popular.	The WMP kōura subgroup led by Ngāti Paoa ki Waiheke is continuing to build understanding and the case for rewilding kōura.
<b>Kororā care, WWF</b>	The project began with engagement in schools around Kororā, supporting the Responsible Pet Ownership Brochure, collaboration with community groups e.g TKOW and land owners The Costal Custodians. We had Jo Sim conduct a 2 week survey on abundance and distribution of Kororā across parts of the island. This data is being worked on to be released to the public now.	There is a lot of tension with kororā care because of Pūtiki Bay. Makes the mahi tricky to navigate.	Over time, build trust that everyone has kororā interests at forefront. Find common ground.  Have the survey data available in an appropriate manner. Wananga with NPKW to see what steps they want to take having seen the results of the survey.
<b>Kororā forum</b>	Initiated by NPIT and DOC, the WMP facilitated 3 forum hui. On hold.	To offer support when it is wanted, not to push if energies are 'off'.	Be open to pick up facilitation again if wanted by diversity of interests.

Pipi Name	Activity description	Learning	Next Steps
Action tracker	As described in the Knowledge backbone. Working with Sustainable Seas to build a digital means of capturing data and openly sharing the data for marine care decisions on Waiheke.	This work is a necessary platform to enable the other multiple pipi. Learning that knowledge is a trigger for power dynamics. Great working with Sustainable Seas.	A digital action tracker subgroup is populating the platform with existing data sets from pipi, eg. kōura, kororā, NPKW and others.
Youth fishers	Creation of Fishing Tackle Recycling pods. Using these as a platform to have good fishing practises conversations.	Youth are creative and practical.	Collect data from prototypes and gather a volunteer group to support Jue in collection of waste.
Conscious swim	Ran prototype event of swimmers connecting with selves, others & moana.	There is an appetite for novel ways of connecting with ocean.	Extend number and diversity of conscious swims.
Te Tiriti workshops	WMP partnered with Waiheke Adult Learning to run 2 Te Tiriti workshops, with the option of online or onsite. Workshops focus on non-Māori learning with 45 participants attending.	Very popular workshops with overwhelming positive feedback to run more.	In discussion about running more Te Tiriti workshops and to establish an ongoing community of practice.
Outer Reef	Exploring use of photo technology like photogrammetry etc for bringing underwater regeneration activity to bigger audience.	Learning how to make the tech work for our purpose and not get distracted by tech. Great partnership with NZ Geo and KTMWT.	Decide on photo tech best suited to WMP purposes. Contract a specific brief.
Kelp Gardeners Phase 2	Refreshing KG for the next phase, led by NPKW and engaging community.	Taking the summer to properly engage with NPKW was effective.	Lean into the full potential of KG for nearshore mauri.
Community Beach Cleans	Running a series of community beach cleans across the island, led by local youth Tilde. Also engaging with local schools to run clean ups close to them Collaborating with Sustainable Coastlines to collect Littler Intelligence Citizen Science data 4 times a year.	NPKW need to be comfortable in supporting the sharing of Ngati Paoa histories.	Complete the upcoming 5 community beach cleans and evaluate if this role should be continued next year.
Waiheke Wetland Week	Partnered with WRT, the WMP to host a wetland regeneration doco on 13th August at Waiheke movie theatre as part of a week's focus on wetlands.	Very popular week with high participation and healthy feeling of love for wetlands and collective effort to protect and regenerate.	Continue working with allies and peers in wetland work.

## Germinating Pipi

There is a constant stream of ideas for pipi, with the WMP being open and encouraging to multiple reinforcing activities. Some of the germinating pipis include:

Talking Fishing
Amplify Anchovies / Focus on Forage fish
Fish Heads / Kai Ika
Mobile kūtai attractors/FAD
Rapid response to marine pest Caulerpa
Seaweed regeneration
Maramataka workshop, guidance
Local & mana whenua content for NZ-VR

## Conclusion

Even with the stresses and strains of Covid, the WMP has been a hive of Ahu Moana activity, setting the foundations for ongoing marine protection and regeneration action for Waiheke’s marine environment.

The WMP Steering Group are proud to present this first year of Phase Two progress report to all and are thankful for the enabling support from the generous and diverse funders as a good investment in regenerating the mauri of Tīkapa Moana.

Nāku iti nei,

Alice McSherry, Craig Thorburn, Dean Ogilvie, Grant Crawford,

Jeanine Clarkin, Lindsay Jeffs, Matt von Sturmer and Tessa O’Shea

1st December 2022



